

Parkheath

Sold on Service

Fellows Road NW3

£3,600 PCM (£831 per week) - Camden Band G



Extremely spacious and bright 3 bedroom maisonette

Wood floor reception

Master bedroom with en suite bathroom

Shower room and guest WC

Close Belsize Park and Primrose Hill amenities

2nd and 3rd floors of a period conversion

Fully fitted modern kitchen

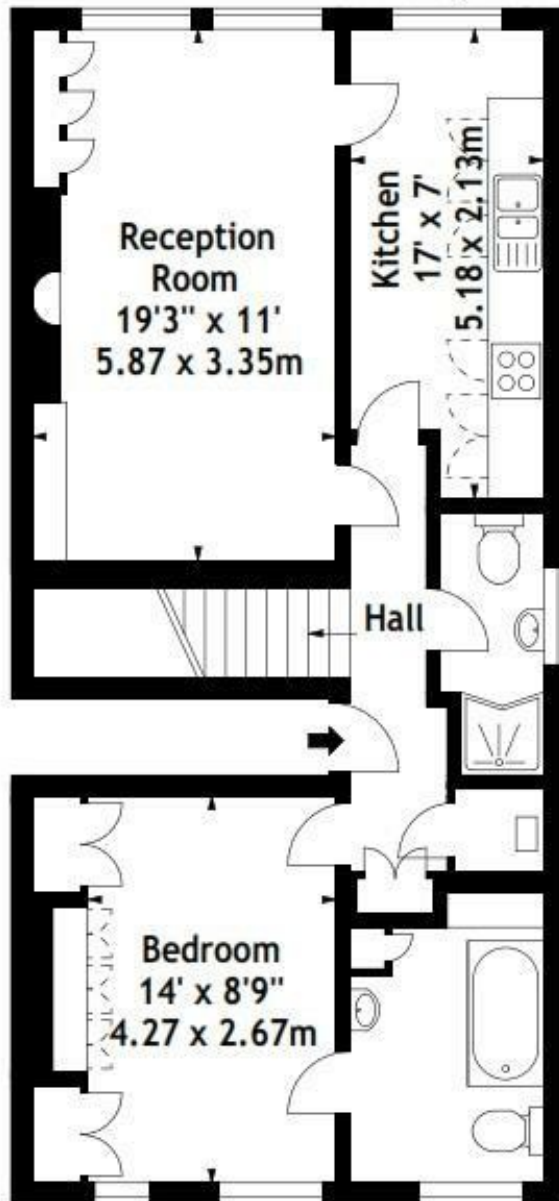
2 further double bedrooms

Located moments from Swiss Cottage Underground

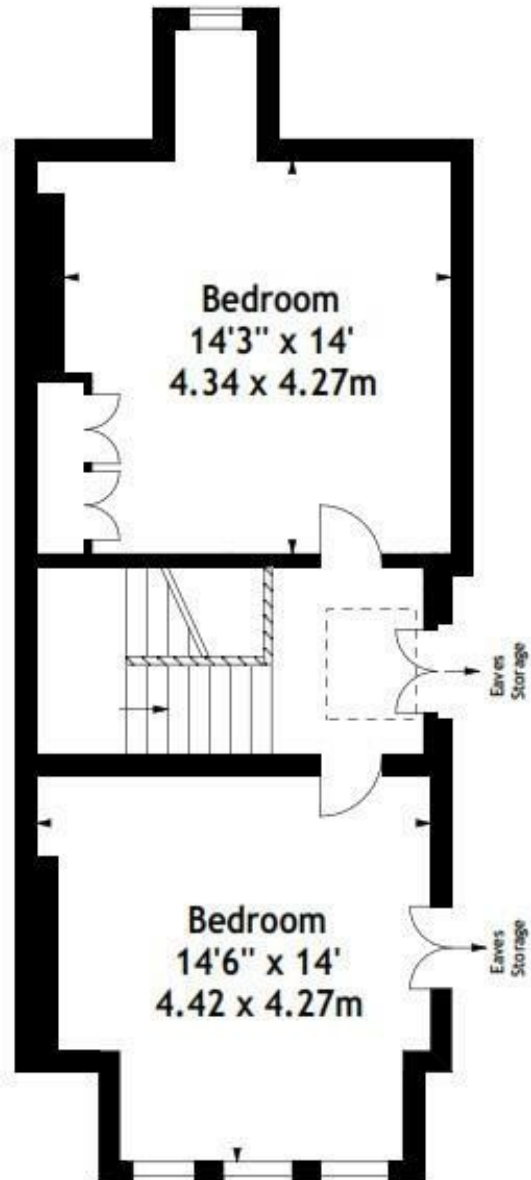
EPC: Rating E, Council Tax: Camden band G

Belsize Park Office 020 7431 3104

Fellows Road, NW3
 Approx. Gross Internal Area
 1226 Sq Ft - 113.90 Sq M



Second Floor



Third Floor

Measured in accordance with RICS guidelines. Every attempt is made to ensure accuracy, however all measurements are approximate. This floor plan is for illustrative purposes only and is not to scale.
 © Datagraphy Ltd 2013
 Photographs * Floorplans * Virtual Tours
 Tel: 0845 643 4401 www.datagraphy.com

The particulars do not constitute part of an offer or contract. The particulars, including text, photographs and plans, are for the guidance only of prospective purchasers/tenants and must not be relied upon as statements of fact. The descriptions provided therein represent the opinion of the author and whilst given in good faith should not be construed as statements of fact. Nothing in these particulars shall be deemed a statement that the property is in good condition or otherwise or that any services or facilities are in good working order. All measurements are approximate